

Life After Lawn

August 22, 2015

9:30 to 11:00 am

Hosted By Mission Resource Conservation District
Karla Standridge and Lance Andersen

Funding for this project has been provided in full or in part through an agreement with the SWRCB and the US EPA under the Federal Nonpoint Source Pollution Control Program (Clean Water Act Section 319).

Workshop Agenda

- Introductions with pre-surveys (A.K.A raffle tickets!)
- Housekeeping Details
- Presentations
 - Karla Standridge, Mission RCD
 - Greg Rubin, California's Own Landscape Design, Inc.
 - Lance Andersen, Mission RCD
- Available Mission RCD Programs and post-surveys
- Raffle!!

What Brought Us Here Today

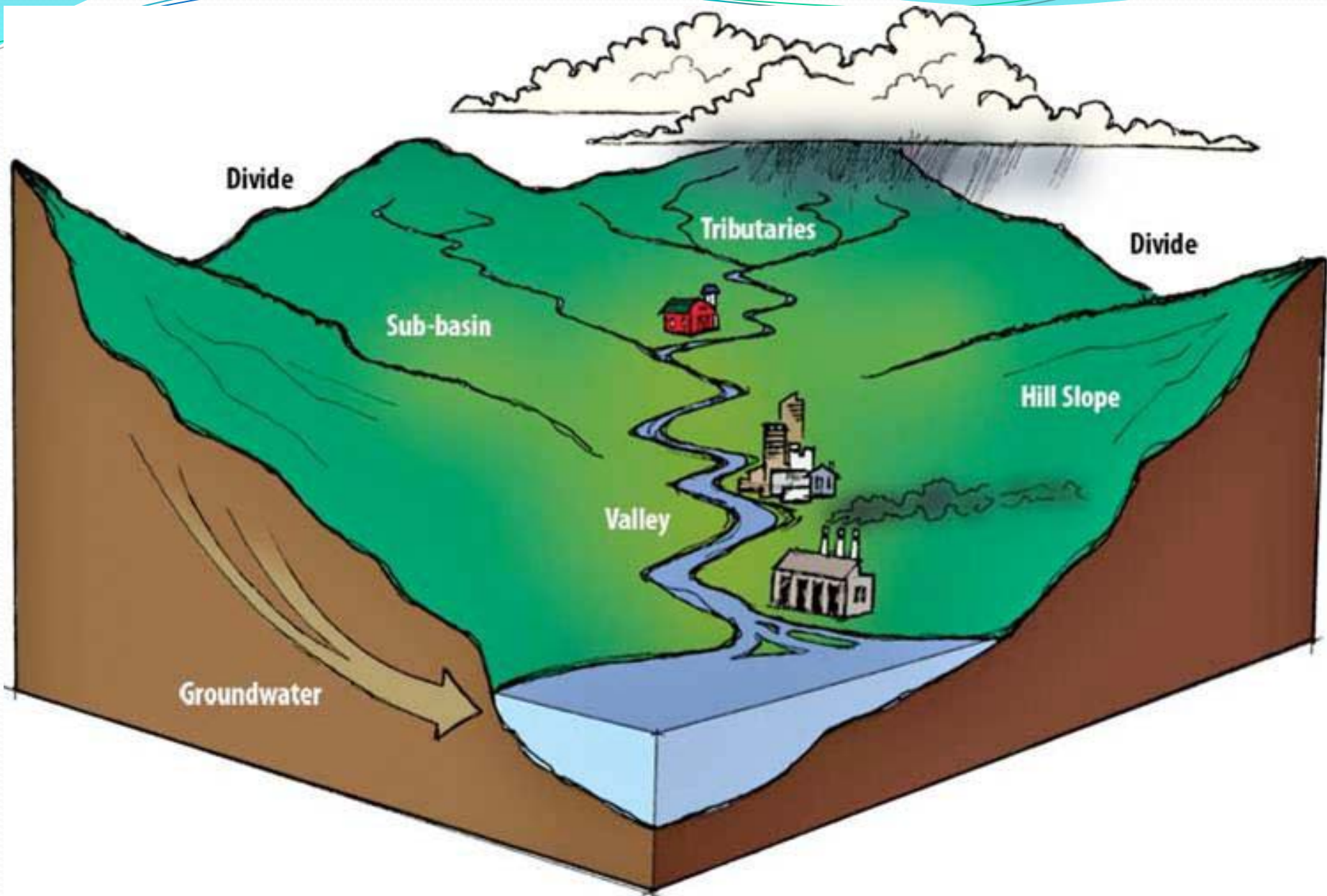
- The Gold of the West: **Water**
- Issues of Concern
 - Supply
 - Cost
 - Quality
- Who is affected



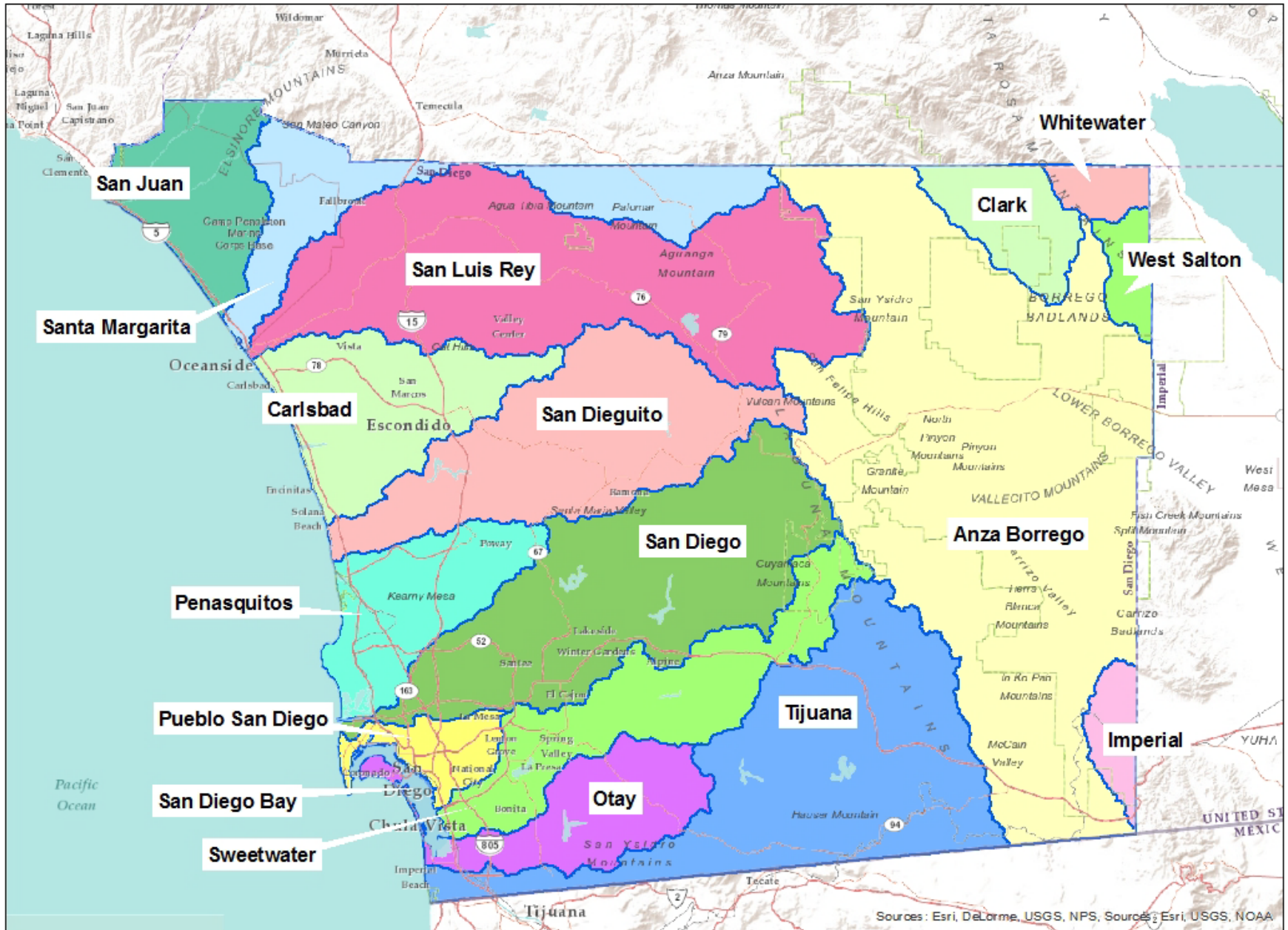
Watersheds 101

- What are they?
- Where are they?
- Which one are we in?





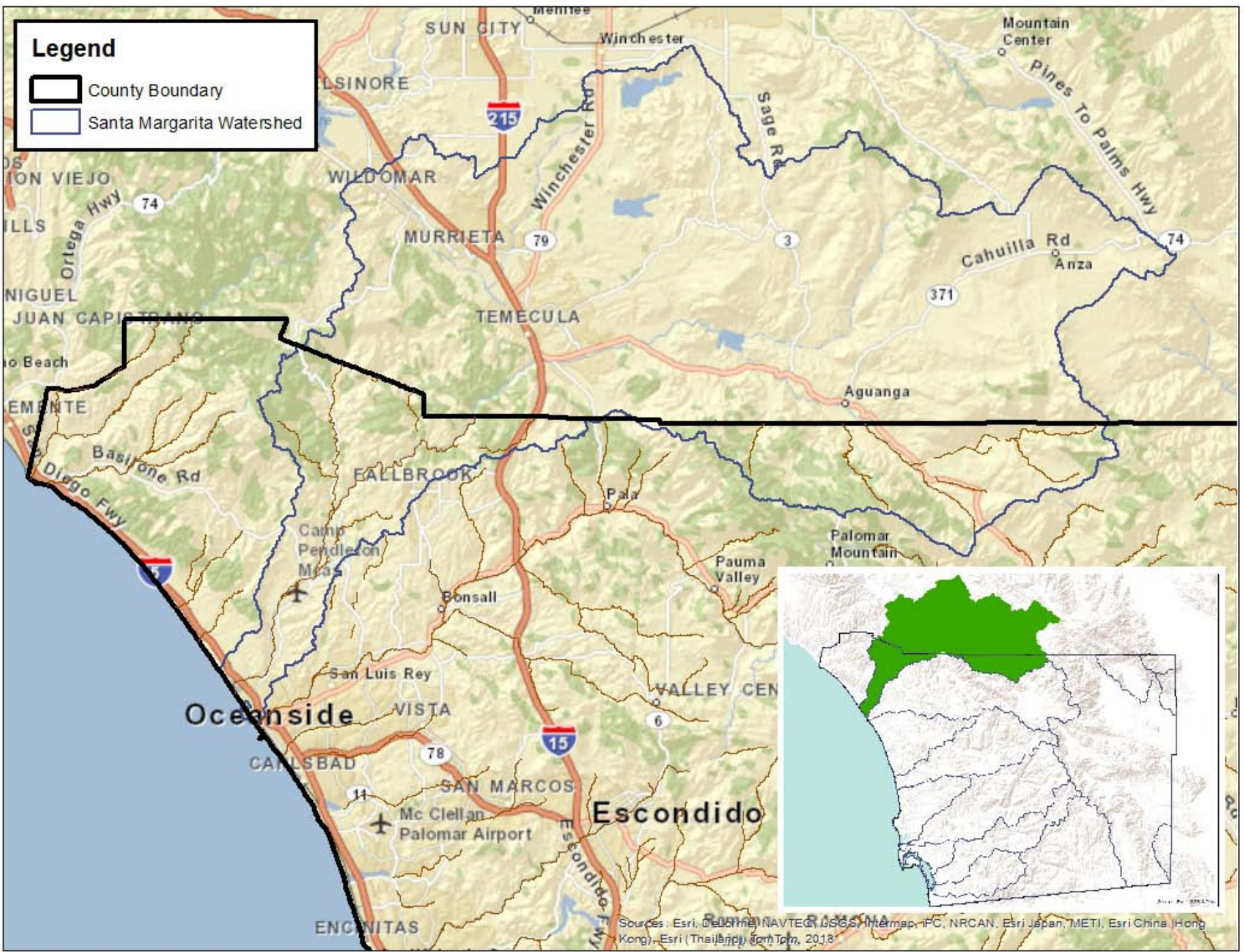


Watersheds of San Diego County



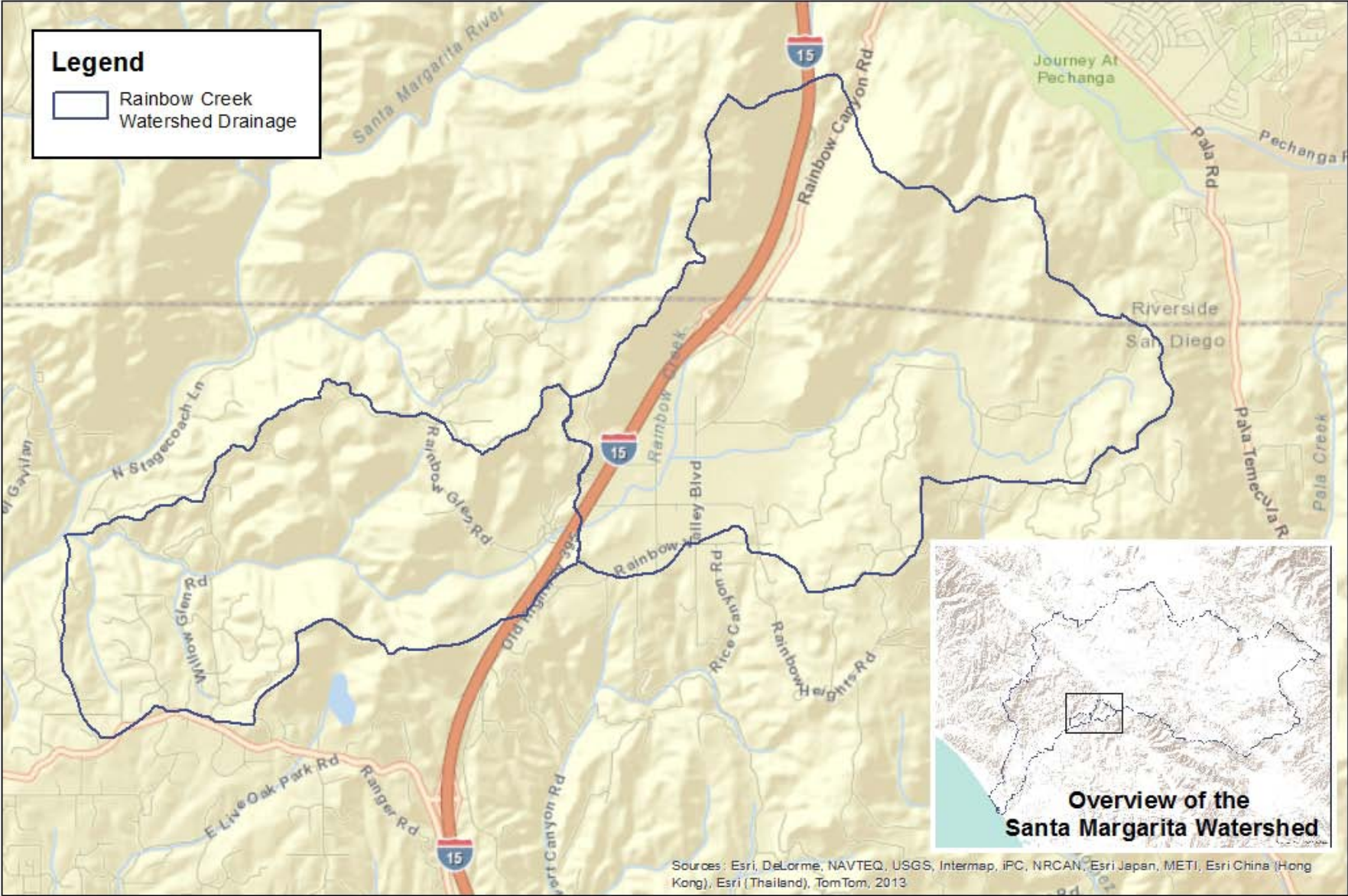
Legend

-  County Boundary
-  Santa Margarita Watershed

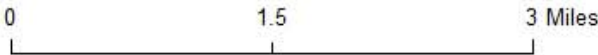


Sources: Esri, DeLorme, NAVTEQ, USGS, Intermap, iPC, NRCAN, Esri Japan, METI, Esri China (Hong Kong), Esri (Thailand), Swisstopo, 2013

Rainbow Creek Watershed Drainage



Sources: Esri, DeLorme, NAVTEQ, USGS, Intermap, iPC, NRCAN, Esri Japan, METI, Esri China (Hong Kong), Esri (Thailand), TomTom, 2013

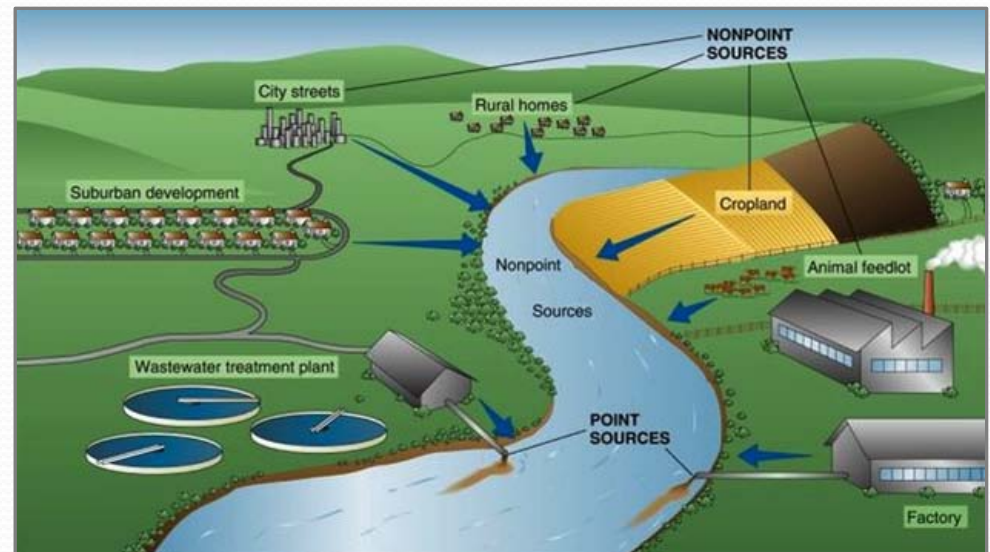


Water Quality and Pollution

- Point Source Pollution



- Non-Point Source Pollution



Storm Drains vs. Sewers

- Sewer water
 - From bathtubs, toilets, and sinks
 - Treatment plant or a septic system
- Storm drain water
 - Runoff
 - Untreated
 - Lake or the ocean

Storm Drain Water





On to the next presentation!